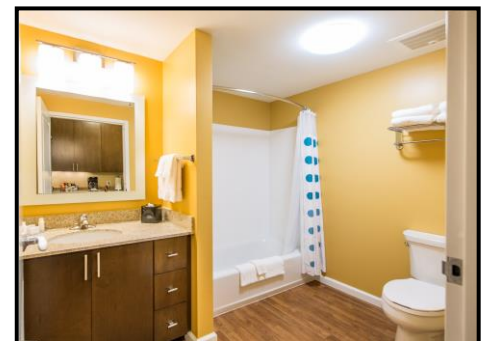


TownePlace Suites by Marriott
2650 Hospitality Boulevard · Florence, SC 29501
p. 843.407.9400 f. 843.407.9401
website: www.marriott.com/flots



TownePlace Suites by Marriott Amenities:

- Every room is a suite 30% larger than a standard hotel room
- Every suite has a minimum of a Queen or King sized bed with a pillow-top mattress, LG flat screen television (upgraded Cable package including HBO), workspace (including desk and chair), and living area; most suites also have a full-size sleeper sofa
- Every suite has a fully equipped kitchen which includes a refrigerator and freezer, dishwasher, garbage disposal, microwave, stove-top range, and any necessary utensils to cook a full meal
- Every suite has spacious storage space including a closet, multiple drawers and cabinets
- 4 Types of Suites Available: King Studio, Queen-Queen Studio, One Bedroom Queen Suite, and Two Bedroom Suite (one Queen bed in each of the two bedrooms)
- Complimentary continental breakfast each morning
- Complimentary grocery service
- Indoor recreation includes a 24/7 Fitness Center
- Outdoor recreation includes a pool, grill, and comfortable seating
- 24 hour on-site laundry facilities; Same-day off-site dry cleaning pick-up and delivery services
- Complimentary wired and wireless high-speed Internet throughout the entire hotel
- 24 hour In a Pinch
- 24 hour Business Center
- Daily housekeeping service available
(30+ nights 2 day a week full housekeeping)
- Pets are allowed, \$75 non-refundable pet cleaning fee per stay
- 628 square foot Meeting Room (located on the 1st Floor)
- All interior corridor hallways with exterior door key card access only between 11:00pm-6:00am
- Complimentary on-site surface parking
- Front Desk Associates are available 24/7
- TownePlace Suites is the newest long-term stay hotel in Florence



Rates are based on number of consecutive nights in four Rate Tiers:

1-4 consecutive Nights, 5-11 consecutive Nights, 12-29 consecutive Nights, 30+ consecutive Nights

Directions:

- **I-95:** Take exit 160A- Florence. At the first stop light, take a Right onto West Radio Drive. At the first stop light on West Radio Drive (intersection landmarks: Civic Center & Chili's), take a Left onto Hospitality Boulevard. TownePlace Suites will be the 4th hotel on the right (beside Residence Inn).
- **I-20:** Follow the I-20 spur into Florence. At the first stop light, take a Right onto West Radio Drive. At the first stop light on West Radio Drive (intersection landmarks: Civic Center & Chili's), take a Left onto Hospitality Boulevard. TownePlace Suites will be the 4th hotel on the right (beside Residence Inn).
- **Hwy 76 (West):** Follow Palmetto Street into Florence. Take a right onto David H. McLeod Boulevard (intersection landmarks: McDonald's & Wells Fargo). Go to the 5th stop light and take a Left onto West Radio Drive. At the first stop light on West Radio Drive (intersection landmarks: Civic Center & Chili's), take a Left onto Hospitality Boulevard. TownePlace Suites will be the 4th hotel on the right (beside Residence Inn).
- **Hwy 76 (East):** Follow Palmetto Street into Florence. At the 2nd stop light, take a Left onto South Ebenezer Road. You will dead end at the 2nd stop light, take a Right onto West Radio Drive. At the 2nd stop light on West Radio Drive, take a Right onto Hospitality Boulevard. TownePlace Suites will be the 4th hotel on the right (beside Residence Inn).

General Area Information:

- **Restaurants within 3 block walking distance:** Chili's, Long Horn, Olive Garden, FireHouse Subs, Western Sizzlin', Hibachi Grill & Buffet, Waffle House (24/7), Golden Corral, Mellow Mushroom, Chick-Fil-A, Chuck E Cheese, Burger King, IHOP, Red Lobster, Ruby Tuesday, Bruster's Ice Cream, LaBamba, 1720 Burger Bar, Buffalo Wild Wings, Percy & Willie's, Chipotle, Tropical Café, San Jose Mexican
- **Shopping within 3 block walking distance:** Home Depot, Kohl's, Magnolia Mall (Belk, Sears, Dick's, Barnes & Noble, Old Navy, etc.), Florence Commons (Target, Bed Bath & Beyond, PetSmart, etc.), AT&T, Toys R US, Dollar Tree
- **Other points of interest:**
 - Florence Civic Center (next door)
 - Swamp Fox Movie Theatre (2 blocks)
 - Phoenix Mart (2 blocks)- closest gas station
 - Wal-Mart Super Store- (3 blocks) closest grocery store; Piggly Wiggly & Harris Teeter (1 mile)
 - Target (3 blocks)